

Multi Camera Turnkey Systems

Portable PC Solution:



StreamPix4-100

- Portable solution available with up to 4 cameras at 100 fps x 640 x 480
- GigE Vision compatible
- Length of recording available in hours
- Monochrome or color cameras
- Also available at 200 fps x 640 x 480 for 2 cameras
- Use Pre-Post triggering to save disk space
- Also available with desktop solution.

StreamPix4-60 with view, review and capture

- 4 cameras, NTSC 60 fps x 640 x 240 color
- Real time MJPEG compression
- Hours of recording with various compression quality.

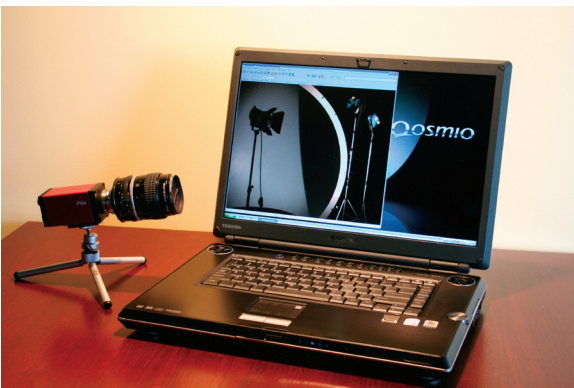
Desktop Solution:



StreamPix4-200

- Intel Dual Core 2 with 4 cameras
- 4 cameras at 200 fps, 640 x 480, 8 bits
- Each camera records for up to 3 hours
- Pre-Post module available
- Gige Vision compatible.

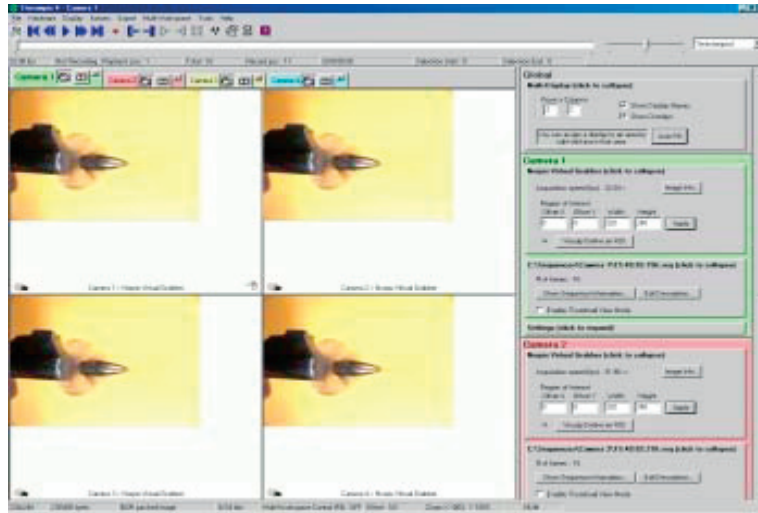
Laptop Solution:



TroublePix 200 Laptop

- Laptop solution at 200 fps x 640 x 480 x 8 bits
- Record up to 20 minutes uncompressed
- Record up to 16 hours with jpeg compression at 75% quality
- Use Gige, FirewireB cameras
- Compatible with GigE Vision, 1394b or camera link (ImperX frame link PCMCIA).

StreamPix4 • Pre-Post Recording for multiple camera use



- Acquire from multiple cameras simultaneously
- Use Pre-Post triggering for saving disk space
- Sequence length in hours per camera
- Portable or desktop solution available
- Custom solutions available, check reverse for turnkey systems.

Pre/Post Trigger (click to collapse)

	HH	MM	SS	MS
Before	0	0	5	0
After	0	0	2	0

Automatic Rearm

- Pre-Post module**
- Set triggering mode
 - Set time to be looped before receipt of trigger
 - Set time to be saved after receipt of trigger
 - Save sequence including before and after loop following receipt of trigger
 - Reset trigger and start acquiring until following trigger.

NorPix, Inc.
 1751, Richardson, suite 6117
 Montreal, Canada, H3K 1G6
 Sales : 514-907-1588
 Tech support : 514-846-0009 ex : 27
 sales@norpix.com
 www.norpix.com

Bullet images courtesy of Cooke Corporation

www.norpix.com/brochures/streampixmultiple.pdf

